



# CONNECARE

**Deliverable 8.8**  
**Final CONNECARE video**

**H2020-EU.3.1: Personalised Connected Care for Complex Chronic Patients**

**Project No. 689802**

**Start date of project: 01-04-2016**

**Duration: 45 months**

Project funded by the European Commission, call H2020 – PHC - 2015	
✓ PU	Public
PP	Restricted to other programme participants (including the Commission Services)
RE	Restricted to a group specified by the consortium (including the Commission Services)
CO	Confidential, only for members of the consortium (including the Commission Services)

**Revision: 01**

**Date: 30-12-2019**



## Document Information

<b>Project Number</b>	689802	<b>Acronym</b>	CONNECARE
<b>Full title</b>	Personalised Connected Care for Complex Chronic Patients		
<b>Project URL</b>	<a href="http://www.CONNECARE.eu">http://www.CONNECARE.eu</a>		
<b>Project officer</b>	Birgit Morlion		

<b>Deliverable</b>	<b>Number</b>	8.8	<b>Title</b>	Final CONNECARE video
<b>Work Package</b>	<b>Number</b>	8	<b>Title</b>	Dissemination, communication and exploitation

<b>Date of delivery</b>	<b>Contractual</b>	M39	<b>Actual</b>	M45
<b>Nature</b>	Prototype <input type="checkbox"/> Report <input type="checkbox"/> Dissemination <input type="checkbox"/> Other <input checked="" type="checkbox"/>			
<b>Dissemination Level</b>	Public <input checked="" type="checkbox"/> Consortium <input type="checkbox"/>			

<b>Responsible Author</b>	Jak Kelly	<b>Email</b>	jak.kelly@adi-uk.com
<b>Partner</b>	ADI	<b>Phone</b>	--

<b>Abstract</b>	This document describes the creation of CONNECARE's final videos (short and long version).
-----------------	--------------------------------------------------------------------------------------------



## Table of contents

<b>EXECUTIVE SUMMARY .....</b>	<b>4</b>
<b>1. INTRODUCTION.....</b>	<b>5</b>
<b>2. DELIVERABLE RESULTS .....</b>	<b>7</b>
2.1 LINKS .....	7
2.2 SCREENSHOTS.....	8
<b>3. CONCLUSIONS.....</b>	<b>9</b>

## List of Figures

<i>FIGURE 1 - SCREENSHOTS FROM THE FINAL VIDEOS.....</i>	<i>7</i>
----------------------------------------------------------	----------



## Executive Summary

This document summarizes the final CONNECARE video.

This was developed based on the results of the project and testimonials from patients, carers, and clinical staff from the 4 sites of the project.

To understand this document the following deliverables have to be read:

Number	Title	Description
<i>Not applicable</i>		



## 1. Introduction

Two final videos have been produced: short and long version. The aim of the short version video is to reach the great audience giving the CONNECARE message in an easy and understandable way, also supported by experiences of CONNECARE users (patients, carers, and clinical staff). The long version goes more deeply in the details of the results and presents more experiences in a longer format.

Testimonials have been selected in each site to give the different view and to give a paramount vision of the work that has been done during the project. Each site was asked of preparing its own video and, then, ADI selected the material and prepare the videos. A list of questions have been prepared by ADI to be done to the testimonials:

- Carer
  - How has Connecare helped you to support the recovery of you XXXX (i.e. mother, father, husband)
- Patient
  - Why did you decide to participate in this study and using the Connecare app?
  - What have you personally found to be the primary benefit(s) of using the Connecare app and why?
    - How effective did you find the use of the Fitbit?
    - How useful did you find the Case manager/Nurses follow up?
  - What will you take with you from the project for the continuation of everyday life?
  - How has CONNECARE helped you to with your recovery?
  - How do you feel that CONNECARE has helped to improve the continuity and quality of care you have received?
  - How do you feel that CONNECARE has helped improve integration between the hospital and the community?
  - Is there anything about the CONNECARE app and / or how it works that you think could be improved and if so, how?
- Clinical



- Which features of the CONNECARE clinical portal are most important / beneficial to you as a clinician / nurse and why? (screening / mapping / surveillance)
- What is the biggest challenge you have faced with the CONNECARE system?
- What future problem would you like to solve with CONNECARE?
- In the trials so far....
  - Has having the support of the Connecare app had a positive impact on patient's attitudes towards improving and promoting self-management of their own health?
  - (CS2/CS3 only) What evidence have you seen that using Connecare has increased patient's motivation towards their pre-operative pre-habilitation?
  - What are you observing as the biggest benefits using Connecare has for your patients so far?

## 2. Deliverable results

### 2.1 Links

The final video summarizes the main results of the project and focuses on experiences from patients, carers, and professionals in the 4 sites of the project.

The videos are currently online:

- short version of 3 minutes 06 seconds: , available here: <https://youtu.be/qdaOAbM0WWk>;
- long version of 5 minutes 32 seconds available here: <https://youtu.be/CLH8o9E5pRE>.

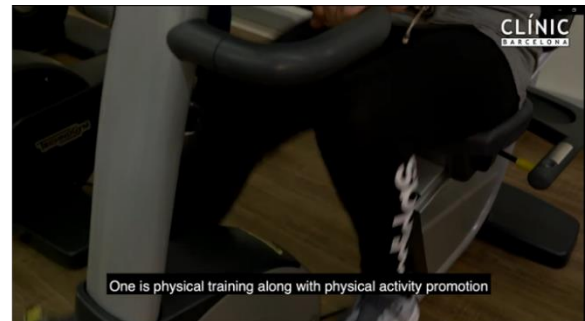
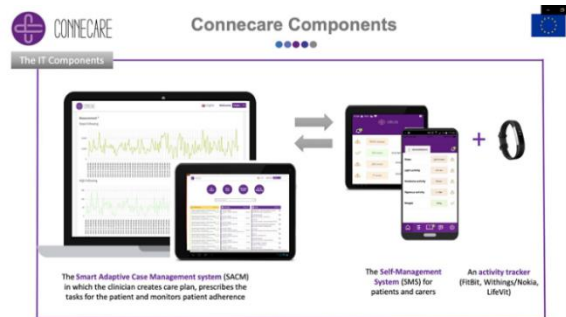


Figure 1 - Screenshots from the final videos.



## 2.2 Screenshots

Some screenshots are given in Figure 1. They show:

- A sketches of the final CONNECARE system through the interfaces of its main components (on top-left);
- The rehabilitation programme performed at Hospital Clínic for CS2 and 3(on top-right)
- A testimonial by a patient from Israel, in English, with subtitles in English (on middle-left)
- Esther Metting from UMCG explaining the experience in Groningen regarding CS1 (on middle-right)
- A patient from CS1 in Lleida explaining her experience, in Catalan with subtitles in English (on bottom-left)
- Felip Miralles, coordinator of the project from EURECAT, summing-up the CONNECARE vision and its main results (on bottom-right).





### 3. Conclusions

In conclusion, the required deliverable, being the results and testimonials of the CONNECARE project, has been produced to the agreed timescale, with approval of all project partners.